

MADE IN GERMANY
Development & Production



*TECHNOLOGY IN SOLAR MODULES

PHOTOVOLTAIC TECHNOLOGY - 20 YEARS OF EXPERIENCE
SOLAR POWER PARKS | INVERTERS | CABLES
ASSEMBLING AND INSTALLATION ACCESSORIES

solarnova*

*TECHNOLOGY, AESTHETICS AND EFFICIENCY



“The future of sustainable development is becoming ever brighter and more latent. When technology helps to protect the environment, we are evolving.”

John von Frantzius, owner

BUILDING THE FUTURE: WE MAKE YOUR IDEAS AND PROJECTS A REALITY

The renewable energy has many faces, but the photovoltaic technology of solarnova is distinctive.

Our brand is defined by experience, competition and quality “Made in Germany”. Since our inception as suppliers for specific issues in a highly specialized sector, we have turned into a solid international partner in all segments of the aesthetic power generation by means of photovoltaic technology. During our 30 years of experience we have provided multiple benefits for developers of photovoltaic products, project designers, promoters, electrical installers, among others.

The photovoltaic technology is not only a matter of taste since it pays homage to our social environment and is a tribute for a better future.



*PHOTOVOLTAIC MODULES



SOL_GT
STANDARD

ELECTRICAL TYPES AND DATA¹

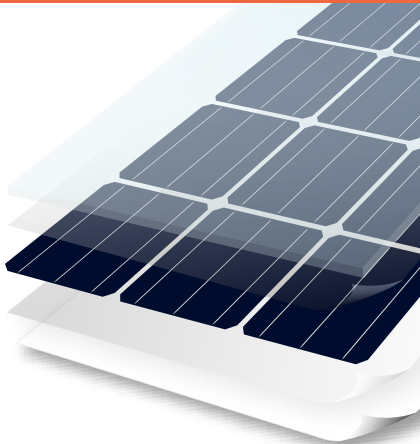
Name	Isc (A)	Impp (A)	Uoc (V)	Umpp (V)	Pmax (W)	Tolerance (W)
SOL 272 GT POLY	9,40	8,76	38,40	31,05	272	0/+4,99
SOL 296 GT MONO	9,84	9,19	40,20	32,30	296	0/+4,99

SOL_GT
TRANSLUCENT

ELECTRICAL TYPES AND DATA¹

Name		Isc (A)	Impp (A)	Uoc (V)	Umpp (V)	Pmax (W)	Tolerance (W)
SOL_GT 11 % translucent	60	9,60	9,15	39,30	31,70	290	+/-5
SOL_GT 33 % translucent	45	9,60	9,15	29,50	23,80	217	+/-5

¹⁾ Typical values under standard test conditions (STC): 1 000 W/m2 irradiation at the module level, Spectrum AM 1,5 and 25 °C cell temperature Power measurement tolerance (Pmax): ±3,5%



- ★ Assured quality through the recognized quality management system ISO 9001:2008.
- ★ More than 20 years of experience in the production of photovoltaic modules.



- ★ Positive output tolerance up to +6 Watt.
- ★ Improved yearly energy production due to the front glass with non-reflecting coating.
- ★ Great stability due to the tempered front glass of 4 mm.

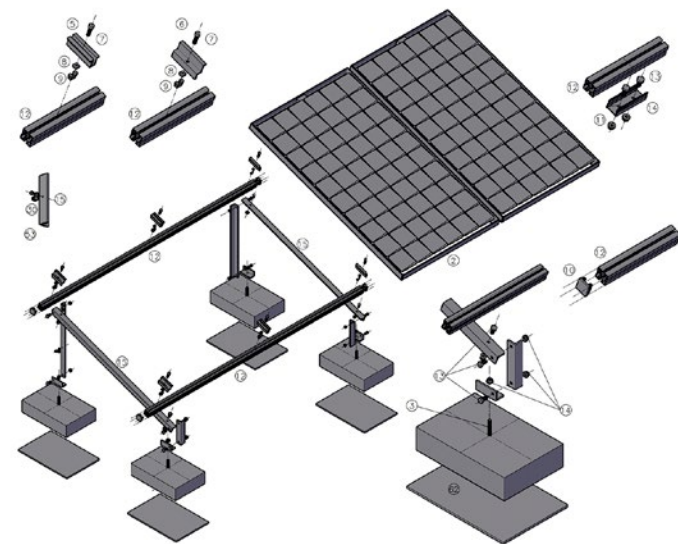


- ★ High voltage system up to 5400 Pa.
- ★ 25 years performance warranty.
- ★ 10 years manufacturer warranty.

**made in
Germany**

* ASSEMBLY AND INSTALLATION ACCESSORIES

INVERTERS



- 2 Photovoltaic module
- 3 Galvanized threaded rod M10
- 5 Intermediate terminal
- 6 Endpoint terminal
- 7 Allen screw, stainless M8 x 25
- 8 Square nut, stainless M8
- 9 Plastic clip, green M8
- 10 Plastic rail cover, grey
- 11 Aluminium profile connection
- 12 Standard aluminium profile 40 x 40 mm
- 13 Hexagon head screw, stainless M10 x 25
- 14 Flanged threaded nut, stainless M10
- 15 Aluminium angle 38 x 38 x 5 mm
- 30 Grounding connector
- 53 Self-tapping screw 1 1/2"
- 61 Concrete block 450 x 300 x 100, 30 kg
- 62 Pinstripe rubber



- * The inverters have a five-year standard factory warranty, with possibility of extension for up to 20 years.
- * Monitoring system included.
- * For indoor, outdoor use and wide voltage ranges.
- * Compact and lightweight.
- * Modern design which allows simple and safe installations and repair works.

- * Best options in the market.
- * New generation of string inverters.
- * Minimum maintenance and easy installation without opening the unit.
- * Integrated monitoring.
- * High efficiency.
- * With UL certification.
- * Natural convection ventilation.
- * Noise-free.



*Jägermeister, Germany
Output of 800 kWp



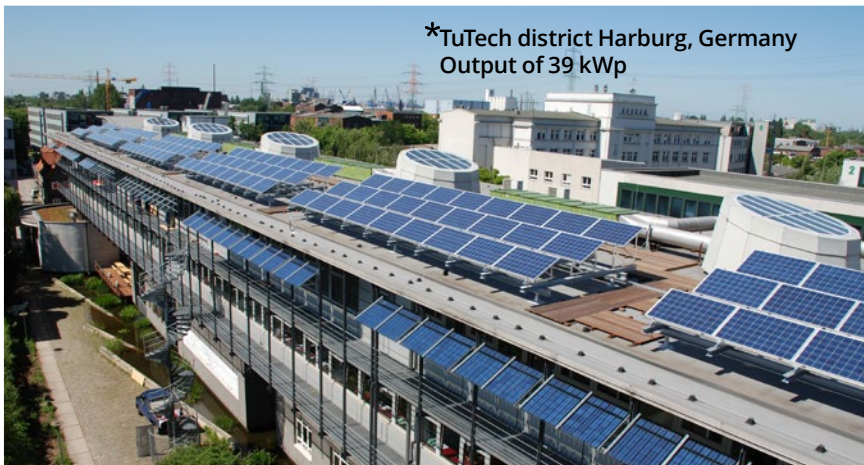
*SMA Niestetal, Germany
Output of 23.80 kWp



*Semi-transparent panels,
HS Hotsson Hotel, Leon, Mexico
Output of 245.5 kWp



*Solar Power Park, Mexico
Output of 3 MWp



*TuTech district Harburg, Germany
Output of 39 kWp



*Solar parking area, Mexico
Output of 162.15 kWp

CABLE CAPACITY

Cables and wires for the solar, automotive and device industry. Our solar cables are TUV and UL certified. The special network insulation exceeds the requirements, achieving a long service life and operational safety. They are available in different outer diameters. They are compatible with standard input plug and socket connections.

Quer- schnitt / cross section	Leiters- bau / conductor design	Widerstand / resistance	min. Wandstärke Isolation / min. insulation thickness	min. Wandstärke Mantel / min. jacket thickness	min. Gesamt- wandstärke / min. overall wall thickness	Außen Ø / outer Ø	Gewicht / weight
[mm ²]	n x max- Ø [mm]	Rmax. [mΩ/m]	[mm]	[mm]	[mm]	[mm]	[kg/km]
4,0	56 x 0,310	5,09	0,70	0,80	1,80	6,10	65,0
6,0	80 x 0,310	3,39	0,70	0,80	1,80	6,70	85,0
10,0	80 x 0,410	1,95	0,70	0,80	1,80	7,60	125,0
16,0	120 x 0,410	1,24	0,70	0,80	1,80	8,90	185,0





*TECHNOLOGY IN SOLAR MODULES

solarnova*
Deutschland GmbH

Am Marienhof 6
22880 Wedel
Germany

T +49 4103 912080
F +49 4103 9120810

info@solarnova.de
www.solarnova.de

 **DESMEX**
CLEAN TECH SOLUTIONS
México

Blvd. José Ma. Morelos 3649
Col. Purísima de Jeréz
León, Gto. C.P.37290
México

T +52 477 7880600
F +52 477 7711002

leon@desmexsolar.com
www.desmexsolar.com

solarnova*
México

Blvd. José Ma. Morelos 3601
Col. Purísima de Jeréz
León, Gto. C.P.37290
México

T +52 477 1946977
F +52 477 1947415

info@solarnova.mx
www.solarnova.mx

solarnova*
Chile

rut 76407059-3
Coembach 197
Peñaflor, Santiago
Chile

M +56 9 57251433
T +52 477 7880600

chile@solarnova.de
www.solarnova.cl

solarnova*